

**Belinda Clark**  
**Director and Manager- Approvals**  
**Clark Lindbeck & Associates**  
**PO Box 144**  
**BULL CREEK WA 6149**  
**Tel: 08 9332 0671**  
**Mob: 0409 109 360**  
**Web: [www.clarklindbeck.com.au](http://www.clarklindbeck.com.au)**

18<sup>th</sup> December 2019

Dear Belinda,

GWR Group Limited (GWR) are proposing to develop the Eagle and Emu Prospects within the Wiluna West Banded Ironstone Formation (BIF) ranges.

On the 10<sup>th</sup> of September 2019, Native Vegetation Solutions (NVS) was commissioned by GWR via Clark Lindbeck and Associates (CLA) to complete a Targeted Threatened Flora survey at the Eagle and Emu Prospects.

GPS locations of the survey areas were provided to NVS by CLA. A total survey area of approximately 192.10 ha was traversed via Yamaha Viking and on foot. Previously known locations of Priority Flora identified in several previous reports were also visited in the field: JSWT (2006), KLA (2010), Markey and Dillon (2009), Read (2010) and NVS (2010 & 2011). Population boundaries of recorded Priority Flora were loosely followed with  $\pm 10$  metre buffers. Depending on the density of plants observed at each site, lots of 5, 10, 20, 30, 50 or 100 plants were individually counted and marked with a GPS location as the population boundary was walked.

Survey efforts were concentrated in areas of suitable habitat for Priority Flora, particularly on ridges and the sloping plains below them, whereas unsuitable habitat was surveyed less intensively.

Priority Flora encountered was marked with a GPS and a tally of the plant numbers was conducted (Table 1 below). The locations of Priority Flora are included in Appendices attached.

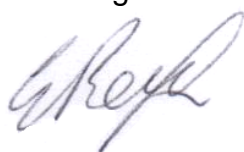
Table 1: Priority Flora encountered within the proposed disturbance area.

TAXONNAME	WA CON STAT	ABUNDANCE	LONGITUDE	LATITUDE	REGIONAL POPULATION	PERCENTAGE OF REGIONAL POPULATION
Eremophila arachnoides subsp. arachnoides	P3	200	119.954878	-26.740798	At least 5000	At most 4%
Ptilotus chrysocomus	P1	1	119.958713	-26.740682	At least 1000	At most 0.1%
Eremophila arachnoides subsp. arachnoides	P3	2	119.958497	-26.741135	At least 5000	At most 0.04%
Ptilotus chrysocomus	P1	2	119.950935	-26.749950	At least 1000	At most 0.2%
Homalocalyx echinulatus	P3	30	119.958146	-26.757574	At least 1000	At most 3%

Although removal of the plants within the survey area is likely to have a low impact on these species locally, the regional implications are considered insignificant.

If you have any queries regarding this work completed, please do not hesitate to contact me on the above-mentioned contact details.

Kind Regards



**Eren Reid**  
Director/Botanist

## References

JSWT, (2006). *Flora and Vegetation of the Wiluna West Banded Ironstone Formations*. Unpublished report prepared for Golden West Resources Ltd, September 2006.

KLA (2010), *Sida picklesiana* (A. Markey and S. Dillon 4126) P1- REGIONAL FLORA SURVEY, Unpublished report by Keith Lindbeck and Associates produced for Golden West Resources Ltd.

Markey A. S. and Dillon S. J., (2009), *Flora and vegetation of the banded iron formations of the Yilgarn Craton: Herbert Lukin Ridge (Wiluna)*, Conservation Science W. Aust. 7 (2): 391-412

NVS, (2010), *Targeted Threatened Flora Survey of exploration targets within the C1, C3 and Joyner's Find areas of the Wiluna West Project, December 2010*, Unpublished report prepared for Golden West Resources Ltd

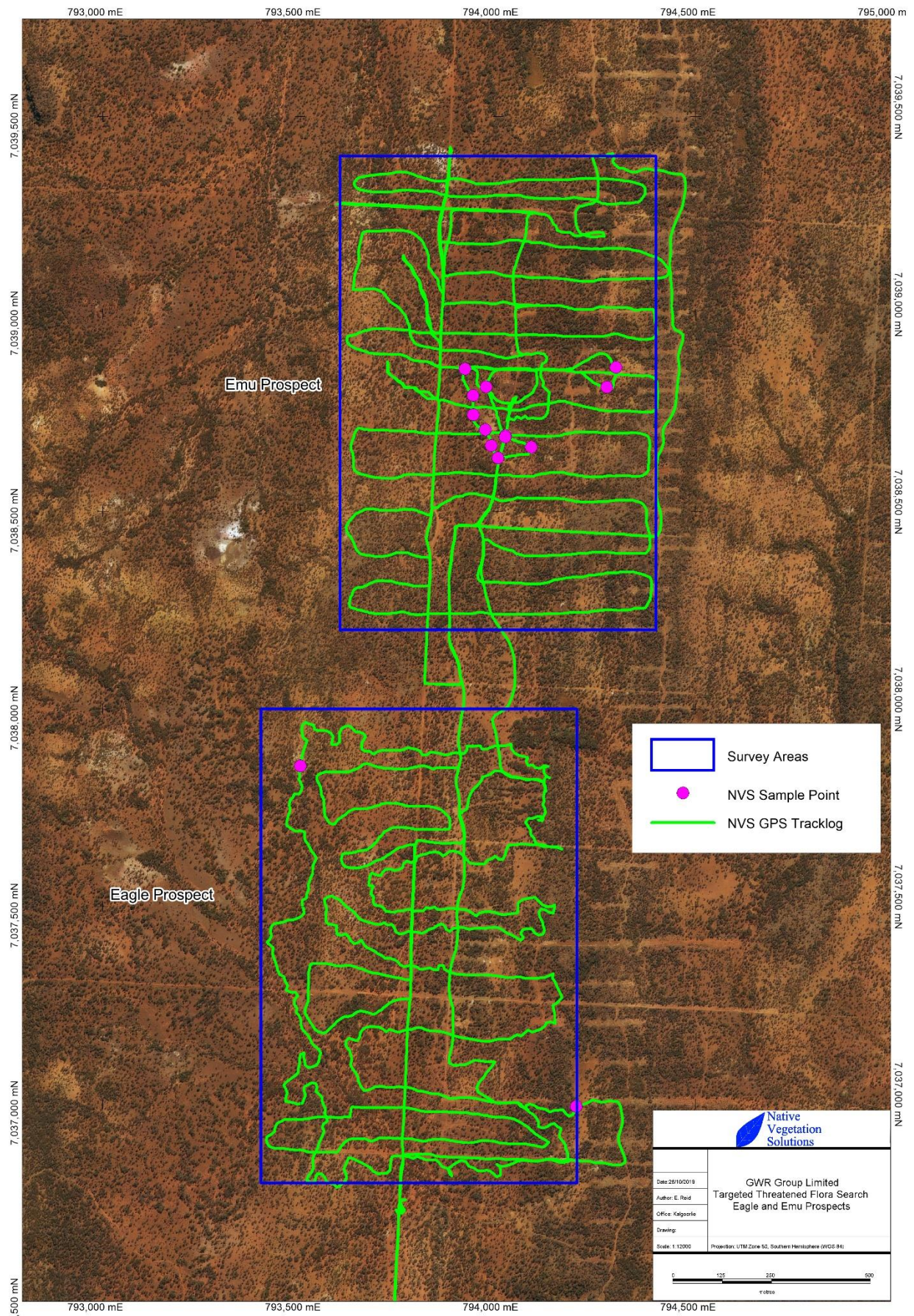
NVS, (2011), *Targeted Threatened Flora Survey of exploration targets within the Golden Monarch, Gold Finch, Iron King, Band 5/6, CJ, C2, South 2 and South 4 areas of the Wiluna West Project, March 2011*, Unpublished report prepared for Golden West Resources Ltd

Read, T.J., (2010), *Herbert Lukin Ridge & Surrounds Vegetation Survey*, Unpublished Report prepared for Golden West Resources Ltd by Recon Environmental, May 2010, Report No. GWR01

WAHERB, (2018), *Florabase – The Western Australian Flora*, Department of Biodiversity, Conservation and Attractions.  
<http://florabase.dpaw.wa.gov.au/>




## Appendix 1: Maps







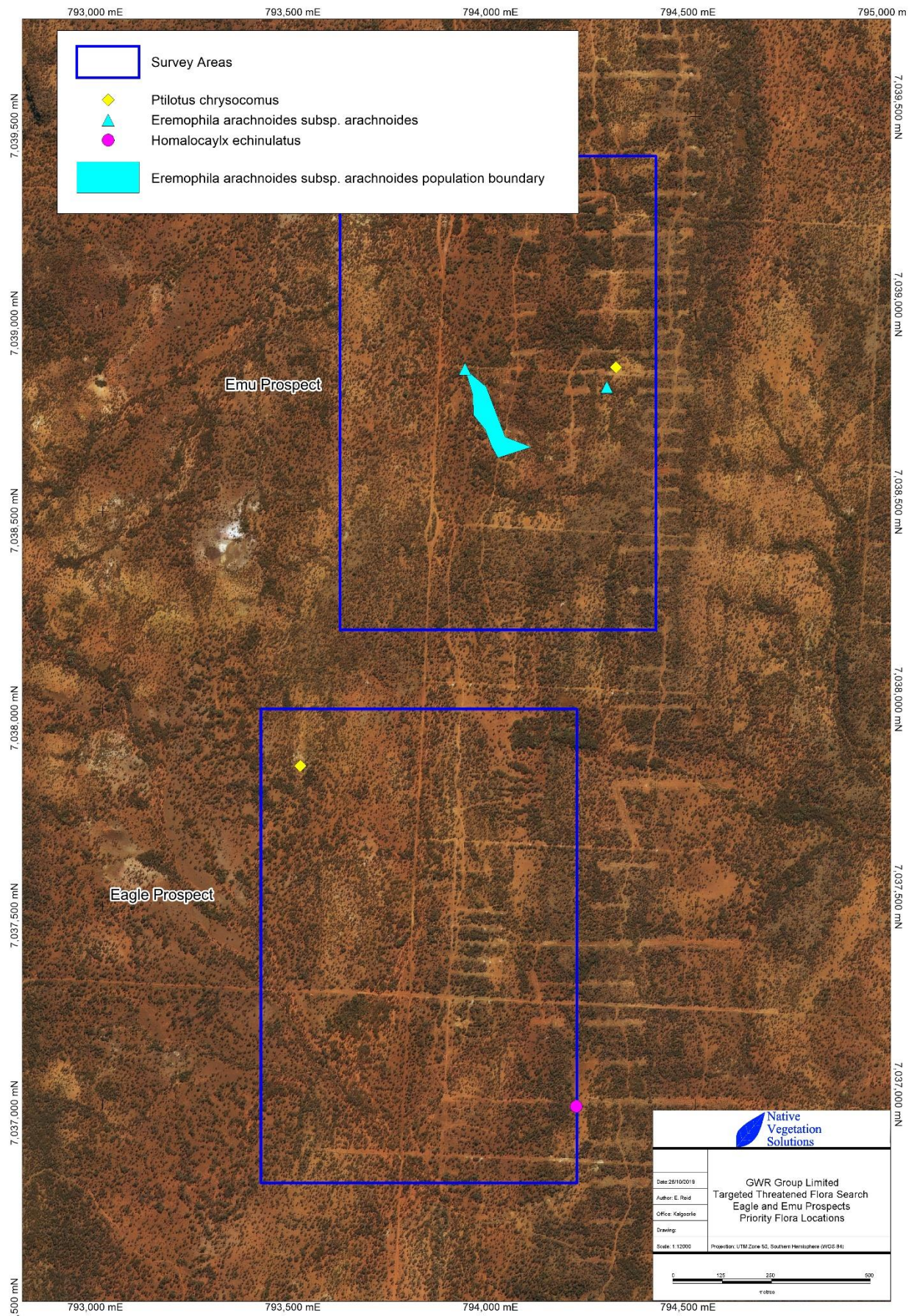
Emu Prospect






Eagle Prospect

	Survey Areas
	NVS Sample Point
	NVS GPS Tracklog

	
<b>GWR Group Limited</b> Targeted Threatened Flora Search Eagle and Emu Prospects	
Date: 28/10/2019	
Author: E. Reid	
Office: Kalgoorlie	
Drawing:	
Scale: 1:12500	Projection: UTM Zone 52, Southern Hemisphere (WGS 84)
	






	Survey Areas
	<i>Ptilotus chrysocomus</i>
	<i>Eremophila arachnoides</i> subsp. <i>arachnoides</i>
	<i>Homalocaylx echinulatus</i>
	<i>Eremophila arachnoides</i> subsp. <i>arachnoides</i> population boundary

Emu Prospect

Eagle Prospect

	
<b>GWR Group Limited</b> Targeted Threatened Flora Search Eagle and Emu Prospects Priority Flora Locations	
Date: 28/10/2019	
Author: E. Reid	
Office: Kalgoorlie	
Drawing:	
Scale: 1:12500	Projection: UTM Zone 52, Southern Hemisphere (WGS 84)
